



INDOFINE Chemical Company, Inc.

121 Stryker Lane, Bldg. 30, Suite 1 • Hillsborough, NJ 08844 • U.S.A.

Phone: (908) 359-6778 • FAX: (908) 359-1179

website: www.indofinechemical.com

e-mail: chemical@indofinechemical.com

CERTIFICATE OF ANALYSIS

Catalog Number: 06-1372

Product Name: **N,N-DIETHYL-p-TOLUIDINE**
(4-Diethylaminotoluene; N,N-Diethyl-4-methylaniline)

CAS Number: [613-48-9]

Lot Number: 1507642

Chemical Formula: C₁₁H₁₇N

Molecular Weight: 163.26

Appearance: Pale yellow liquid

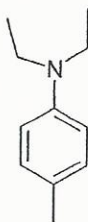
Solubility: Soluble in chloroform

TLC: n-Hexane:Ethyl acetate (9:1)

NMR Spectrum: Enclosed (conforms to the structure)

Storage: Store in a cool, dry place

Purity(HPLC): 99.90%





INDOFINE Chemical Company, Inc.

121 Stryker Lane, Bldg. 30, Suite 1 • Hillsborough, NJ 08844 • U.S.A.

Phone: (908) 359-6778 • FAX: (908) 359-1179

website: www.indofinechemical.com

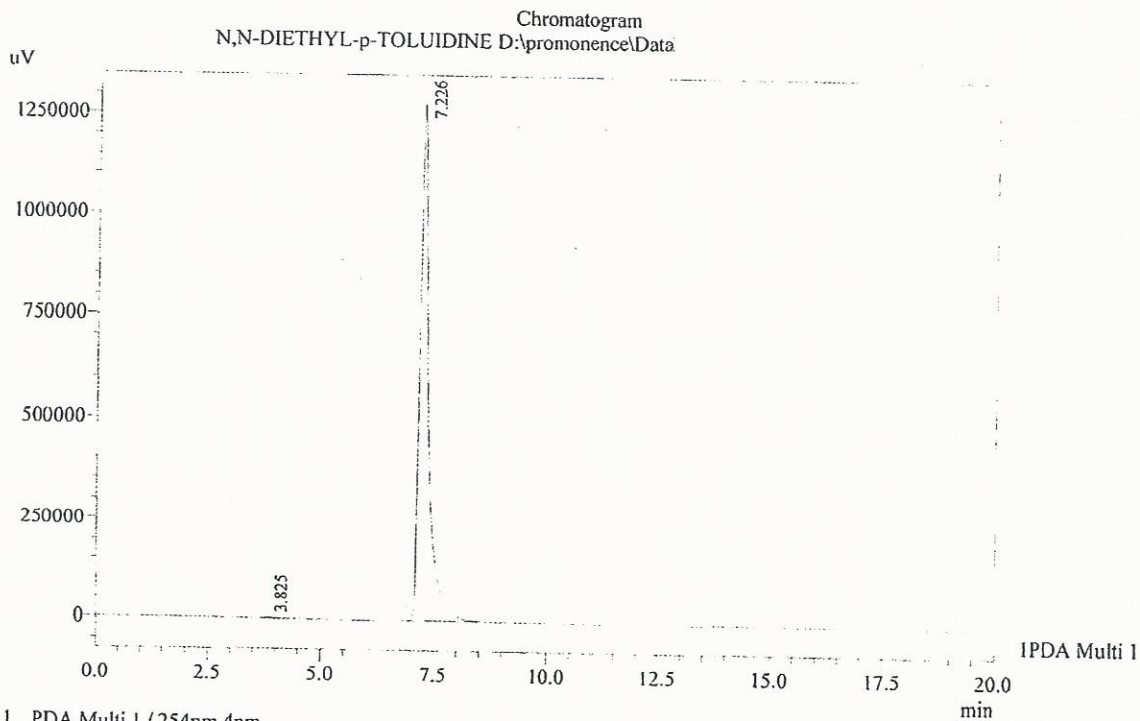
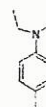
e-mail: chemical@indofinechemical.com

HPLC ANALYSIS

Acquired by : Admin
Sample Name : N,N-DIETHYL-p-TOLUIDINE
Sample ID : Lot no:1507642
Injection Volume : 20 uL
Data Filename : 210815B.lcd
Method Filename : Linear Isocratic.M.lcm

Catalog No.: 06-1372
Product Name: N,N-Diethyl-p-toluidine
Lot No.: 1507642

Column : Gemini C-18(2), (250mm x4.6mm 5.0μ)
Flow : 1.500 mL/min.
Mobile Phase : A(30% water) B(70% of Acetonitrile)



I PDA Multi 1 / 254nm 4nm

PeakTable

Peak#	Name	Ret. Time	Area	Area %	Relative Retention Time
1	RT:3.825	3.825	18177	0.10	0.53
2	N,N-DiEt-p-Toluidine	7.226	18061243	99.90	1.00
Total			18079421	100.00	



INDOFINE Chemical Company, Inc.

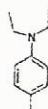
121 Stryker Lane, Bldg. 30, Suite 1 • Hillsborough, NJ 08844 • U.S.A.

Phone: (908) 359-6778 • FAX: (908) 359-1179

website: www.indofinechemical.com

e-mail: chemical@indofinechemical.com

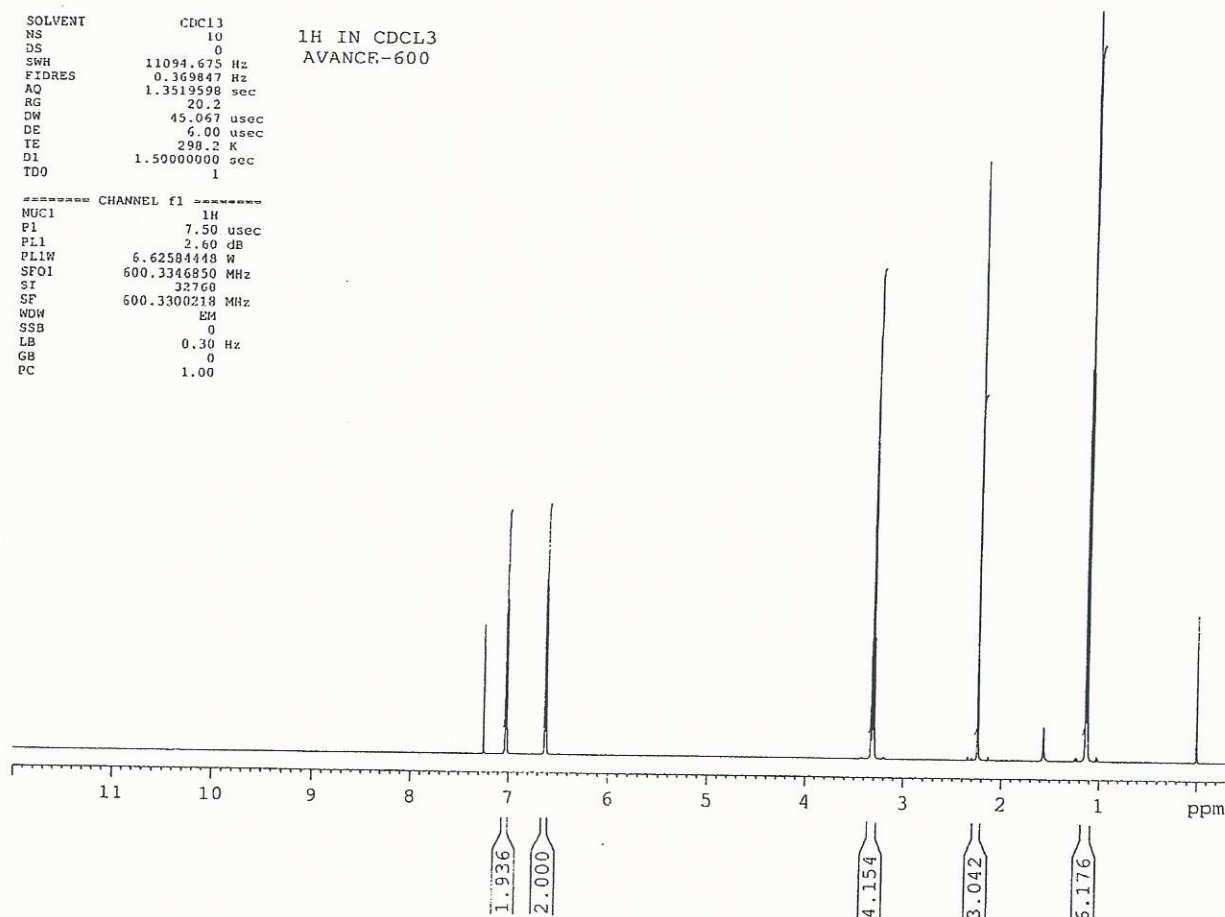
Catalog No.: 06-1372
Product Name: N,N-Diethyl-p-toluidine
Lot No.: 1507642



SOLVENT CDCl₃
NS 10
DS 0
SWH 11094.675 Hz
FIDRES 0.369847 Hz
AQ 1.3519598 sec
RG 20.2
DW 45.067 usec
DE 6.00 usec
TE 298.2 K
D1 1.50000000 sec
TDO 1

1H IN CDCL₃
AVANCE-600

----- CHANNEL f1 -----
NUC1 1H
P1 7.50 usec
PL1 2.60 dB
PLW 6.62504448 W
SFO1 600.3346850 MHz
SI 32768
SF 600.3300218 MHz
WDW EM
SSB 0
LB 0.30 Hz
GB 0
PC 1.00





INDOFINE Chemical Company, Inc.

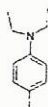
121 Stryker Lane, Bldg. 30, Suite 1 • Hillsborough, NJ 08844 • U.S.A.

Phone: (908) 359-6778 • FAX: (908) 359-1179

website: www.indofinechemical.com

e-mail: chemical@indofinechemical.com

Catalog No.: 06-1372
Product Name: N,N-Diethyl-p-toluidine
Lot No.: 1507642



SOLVENT CDCl3
NS 10
DS 0
SWH 11094.675 Hz
FIDRES 0.369847 Hz
AQ 1.3519598 sec
RG 20.2
DW 45.067 usec
DE 6.00 usec
TE 298.2 K
D1 1.50000000 sec
TDO 1

1H IN CDCL3
AVANCE-600

***** CHANNEL F1 *****
NUC1 1H
P1 7.50 usec
PL1 2.60 dB
PL1W 6.62584448 W
SFO1 600.3346850 MHz
SI 32768
SF 600.3300218 MHz
WDW EM
SSB 0
LB 0.30 Hz
GB 0
PC 1.00

